





Disparities in cancer survival

High income



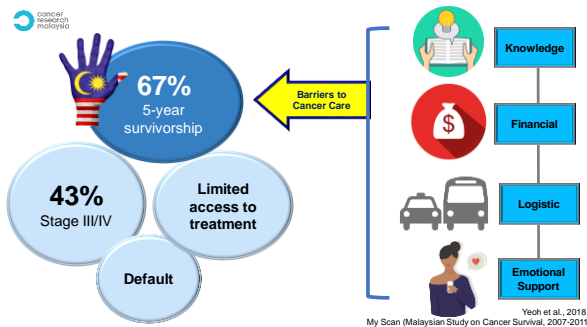
Breast aware
Attend screening
Mostly present **early**
Seek 2nd opinion from **doctors**
Access to **private** healthcare
Access to targeted therapies
Survival >90%

Low income



Not breast aware
Don't attend screening (<10%)
Mostly present **late**
Seek 2nd opinion from **alternative medicine**
Access **public** healthcare
No (limited) access to targeted therapies
Survival <65%

National Cancer Registry (2012-2016),
MyScan (Malaysian Study on Cancer Survival, 2007-2011),
NHMS (National Health and Morbidity Survey)





Patient Navigation Programme Phase 1
2 Addressing financial barriers





Patient Navigation Programme Phase 1
3 Managing defaulters

- Characteristics of defaulters**
1. Age (Younger/Older)
 2. Marital status (Single/widow)
 3. Staying far from Hospital, depend on public transport
 4. Sole breadwinner/self employed or having financial challenges
 5. Caregiver for young children, older parents or family members with chronic illness
 6. Not the main decision maker
 7. No support system at home
 8. Co-morbidities
 9. Previous life crisis
 10. Bad experience in healthcare generally or in cancer, e.g. through family member affected by cancer
 11. Belief/Usage of TCM
 12. Poor breast cancer based literacy
 13. Delayed medical attention >3months



- Telephone follow- up
- Counselling
- Patient and Caregiver Education
- Case Management
- Home Visit



Patient Navigation Programme Phase 1
4 Enabling shared decision making





Patient Navigation Programme @HUS: Phase 2 pilot





Summary

1. **Phase 1 PNP in hospital:**
 - ensures patients access diagnostic resolution and timely treatment.
 - Improves timeliness of diagnosis
 - Improves timeliness of surgery
 - Reduces default rate
 - **Help us do more by being a partner in the programme**
 - **Email us to find out more about how to use the decision aids**
2. **Phase 2 +3 PNP in primary care and community:** pilot programme currently being planned, with goal of enabling early detection of breast cancer
 - **Help us do more by being a partner in the programme**



Partnering for Community Impact!

- Pink Ribbon Centre- HUS Invites Sarawak based:**
- a. Non- Profit Organizations (Cancer and Non Cancer Based)
 - b. Community Leaders/Ketua Kampung/Tuai Rumah
 - c. Local Food Banks
 - d. Transport Companies
 - e. Women Based Societies/Organizations
 - f. Religious Societies/Organizations
 - g. Local Courier Companies
 - h. Community Health Workers
 - i. KOSPEN – Community Health Volunteers
 - j. Retired Healthcare Professionals (Doctors & Nurses)
 - k. Jawatankuasa Kemajuan dan Keselamatan Kampung (JKKK)



If you are interested drop us an email or call us:
 i. Mahes (PNP Manager) – maheswari.jaganathan@cancerresearch.my (016- 519 9005)
 ii. Clara (HUS Community Navigator) - clara.chong@cancerresearch.my (012- 916 4742)



Main funder:



Partners:





**Our priority is ensuring
Asians are not left out
in the fight against cancer.**

We are the only non-profit organisation in Malaysia dedicated to saving lives through impactful research focusing on the Malaysian population and communities across Asia.